

# Lexmark Multi-Language Printing Capabilities for SAP



Printing solutions for creating high-quality documents in any language.

Overcoming language barriers is essential for success in the international marketplace. Therefore, it's critical that companies with plants or offices in multiple countries be able to consistently produce concise, high-quality printed documents in multiple languages.

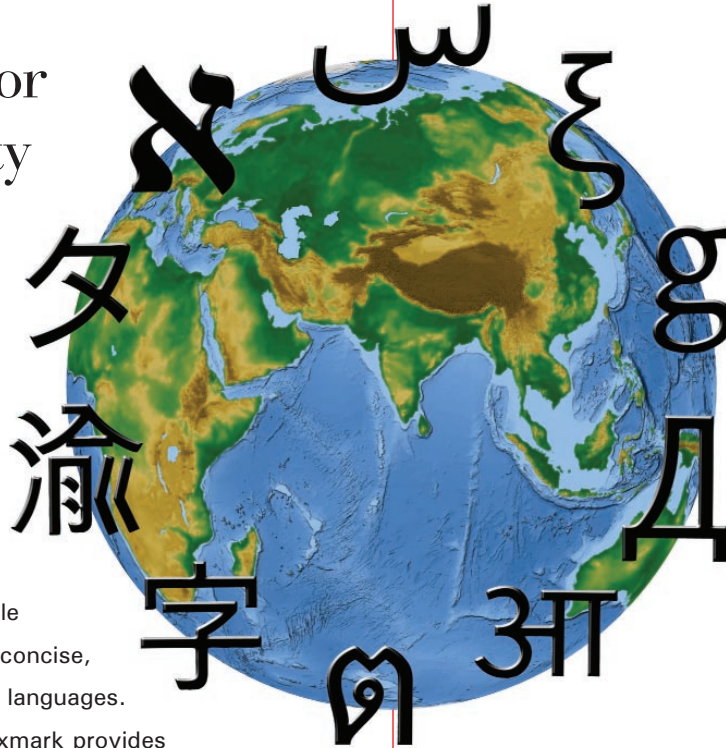
As an SAP Global Technology Partner, Lexmark provides comprehensive international language support for the SAP environment with three unique solutions:

- **Lexmark International Printing for mySAP Business Suite**
- **Lexmark Font Cards**
- **Lexmark Base Printer Font Support**

## Competitive Advantage

**Lexmark International Printing for mySAP Business Suite** is a software solution that allows you to print any native language character specified in the Unicode 3.0 standard. If you need to print only Simplified Chinese, Traditional Chinese, Japanese or Korean, **Lexmark Font Cards** are the perfect solution.

Lexmark's technology facilitates cost-effective printing, increases employee productivity and creates superb document impressions. You will get multiple language support on a single printer configuration worldwide for all your proposals, reports, packing lists, labels, letters and shipping invoices.



## LEXMARK SOLUTIONS

### **Lexmark International Printing for mySAP Business Suite**

Print any Unicode 3.0 language, using SAP R/3 Enterprise.

### **Lexmark Font Cards**

Print Simplified Chinese, Traditional Chinese, Japanese or Korean using SAP R/3 release 4.0A or higher.

### **Lexmark Base Printer Font Support**

Print Roman Alphabet, Cyrillic or Thai.\*

\* Thai printing done with Windows SAP GUI.





**The Lexmark International Printing for mySAP Business Suite Software CD**



**Full Suite of Options**

The International Printing for mySAP Business Suite is a joint development between Lexmark and SAP that fully supports SAP's Unicode initiative. The Unicode standard provides a unique number for each character, no matter what program or language is being used. The Unicode font is downloaded to a hard disk drive in the Lexmark printer for fast access. A single printer model and feature configuration can be rolled out worldwide. This will greatly simplify product installation, maintenance, troubleshooting and support.

Unicode is currently supported in SAP R/3 Enterprise, mySAP Business Intelligence, mySAP Supply Chain Management and several scenarios of mySAP Customer Relationship Management. SAP plans Unicode support in future releases of mySAP solutions. More information is available at Lexmark's Web

site: [www.lexmark.com/US/solutions/SAP/mySAP](http://www.lexmark.com/US/solutions/SAP/mySAP) including a list of currently supported printers.

**LEXMARK SOLUTION OPTIONS**

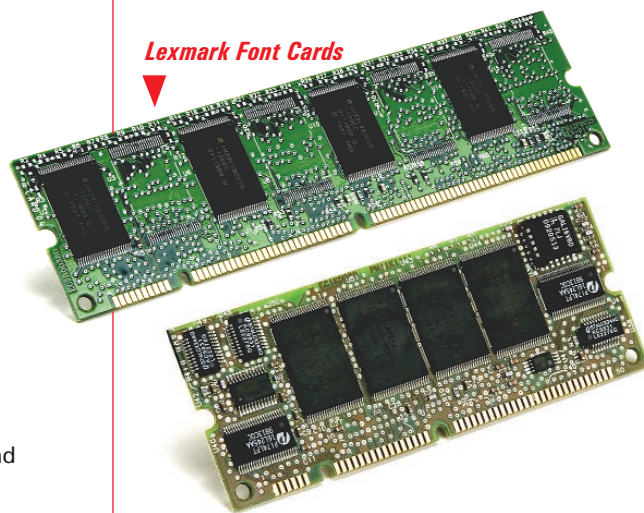
	Arabic	Chinese (Simplified)	Chinese (Traditional)	Cyrillic	Hebrew	Japanese	Korean	Roman Alphabet	Thai	All Unicode 3.0 Languages
<b>Base Printer Capability</b>				Printer				Printer	Windows	
<b>Font Cards</b>		SC Card	TC Card			J Card	K Card			
<b>International Printing (IP)</b>	IP	IP	IP	IP	IP	IP	IP	IP	IP	IP

**Superior Fonts**

Using Lexmark Font Cards with a Multi-Display/Multi-Processing (MDMP) configuration, you can print and display Simplified Chinese, Traditional Chinese, Japanese, or Korean on your SAP system. The fonts contained in the cards emulate the fonts provided in Microsoft Windows. The use of the printer resident fonts in the cards improves printing performance and minimizes network traffic since less data is downloaded to the printer. Each font card supports a number of encodings appropriate for each language.

Font cards are available for most currently available Lexmark laser printers. Visit [www.lexmark.com](http://www.lexmark.com) for your specific printer model and language selection.

**Lexmark Font Cards**



**Broaden Your World**

Lexmark's solutions can benefit your worldwide printing by

- reducing hardware investment,
- reducing maintenance costs,
- creating cost-effective, high-quality documents, and
- improving productivity and cutting personnel costs.



For more technical detail and compatibility information visit [www.lexmark.com/US/solutions/SAP/multilanguage](http://www.lexmark.com/US/solutions/SAP/multilanguage).